



**KÜNSTLERHAUS VEREINIGUNG**  
KÜNSTLERHAUS

**YOUR  
EXHIBITION  
AT THE  
KÜNSTLERHAUS**

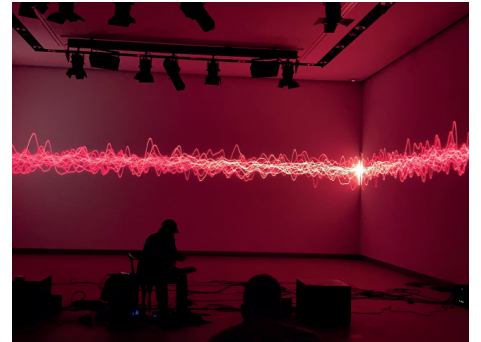
## THE KÜNSTLERHAUS

The Künstlerhaus was built in 1868 by Austria's largest artists' association in the style of an Italian Renaissance villa, centrally located at Karlsplatz, as a social and exhibition center. Following a full renovation, the building now shines again in its

original condition and offers event spaces equipped with state-of-the-art technology.

Available for use are the entire upper floor, the historic Salon Karlsplatz, and the newly

constructed Factory – ideal venues for your inspiring events, whether it's a gala dinner, cocktail reception, birthday party, concert, press conference, exhibition, symposium, or presentation.

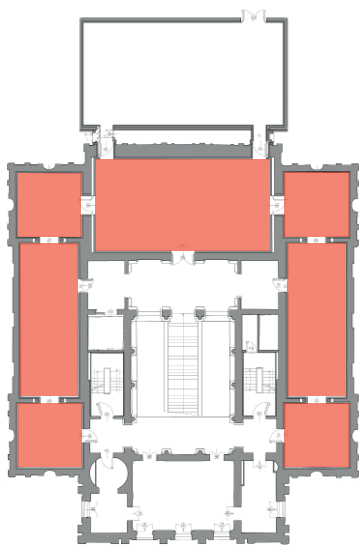


### EXHIBITION SPACES ON THE UPPER FLOOR

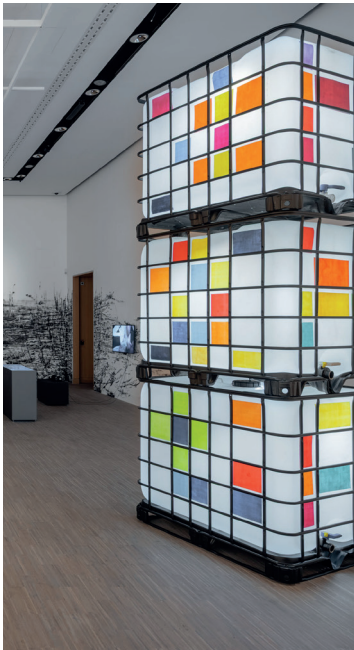
The rooms on the upper floor cover approximately 490 m<sup>2</sup>, providing a spacious area for implementing a wide range of exhibition or event formats.

#### Rental Costs

Day Rental and Evening Events:  
€12,000 (net, excluding VAT)



EXHIBITION EXAMPLES UPPER FLOOR



**FACTORY**

The Factory offers approximately 200 m<sup>2</sup> of space for implementing a wide variety of event formats under optimal technical conditions.

**Rental Costs**

Day Rental and Evening Events:

€ 7,000 (net, excluding VAT)

Half-day rental:

€ 4,000 (net, excluding VAT)

**Maximum Occupancy**

150 people (seated)

**Audio Technology**

- 1 Yamaha QL1 Digital Mixing Console plus Yamaha TI01608D Stagebox
- 2 Shure ULXD40 4-Channel Wireless Receivers incl. – 2 x Beta 87A Handheld Transmitters – 2 x Bodypack Transmitters incl. DPA Headsets
- 4 d&b 10A Point Source Loudspeakers
- 2 d&b 18S Compact Subwoofers for Fixed Installations
- 4 d&b E5 Compact Coaxial 2-Way Loudspeakers

**Video Technology**

- 1 Panasonic Projector  
– Model: PT-RZ970BEJ-ET-UK20  
– incl. Standard Lens 1.7–2.4:1
- 1 Panasonic ET-DLE150 Lens  
– Wide-Angle, Throw Ratio 1.3–1.9:1

**Technik Licht**

- 12 Expolite LED Fresnel Spotlights, 200W, RGBAL, CRI >90, 14–45°, 2700–8000K
- 6 Expolite LED Fresnel Spotlights, 300W, Osram, 3200K Warm White, CRI >90, 15°–60°
- 2 Expolite LED Profile Spotlights, RGBAL, 250W, 2700–8000K, incl. 50° lens tube

**Rigging**

Infra-truss support system, 3-phase power rail, DMX line, Chainmaster D8+ electric chain hoists

**Personnel Costs**

For events with more than 50 people, as well as for events held outside of opening hours (daily from 10 AM to 6 PM), additional personnel costs will apply (supervision, cloakroom, cleaning). Personnel costs can be clarified in advance upon request and after submission of a detailed schedule.



EVENT EXAMPLES FACTORY



## SALON KARLSPLATZ

With the Salon Karlsplatz, the restored former “Ranftzimmer“, the Künstlerhaus offers a venue that, with its historical ambiance and magnificent view of Karlsplatz, is perfectly suited for your festive event.

Salon Karlsplatz offers approximately 70 m<sup>2</sup>, plus two adjoining rooms for catering and cloakroom use.

**Maximum Occupancy**  
60 people (seated)

### Rental Costs

Day Rental and Evening Events:  
€ 1,900 (net, excluding VAT)  
Half-day rental:  
€ 1,000 (net, excluding VAT)

### Audio Technology

- 2 Sennheiser LSP Pro
  - Portable Professional Speakers
  - incl. stands
- 2 Sennheiser EW 335 G3-B-X
  - Vocal Set

### Video Technology

- 1 Samsung 75“ Monitor
  - on mobile (rollable) stand

### Personnel Costs

For events with more than 50 people, as well as for events held outside of opening hours (daily from 10 AM to 6 PM), additional personnel costs will apply (supervision, cloakroom, cleaning). Personnel costs can be clarified in advance upon request and after submission of a detailed schedule.



KÜNSTLERHAUS VEREINIGUNG

# KÜNSTLERHAUS

## EVENT EXAMPLES SALON KARLSPLATZ



## GENERAL INFORMATION

### Access

Visitor access is typically via the main staircase and through the exhibition spaces. For events in the Factory, access via Bösendorferstraße can be arranged in exceptional cases.

### Cloakroom

The main visitor cloakroom is located on Level -1, but temporary cloakroom setups can also be arranged in the foyer or on the upper floor.

### Furniture & Technical Equipment

Use of available furniture (chairs, high tables, conference tables) is included in the rental price. Technical equipment (e.g. monitors) is available on request. Deliveries can be scheduled outside of public opening hours (daily from 10:00 AM to 6:00 PM).

### Catering

Catering services can be arranged through Ludwig & Adele (the in-house restaurant and bar). Please note that catering setup is only permitted outside of opening hours (daily 10:00 AM – 6:00 PM).

### Exhibition Tours

Guided tours of the current exhibition can be booked upon request.





## INFORMATION AND BOOKING APPOINTMENTS

### Künstlerhaus

Gesellschaft bildender Künstlerinnen  
und Künstler Österreichs  
Karlsplatz 5  
1010 Vienna

### Ana Sánchez de Vivar

sanchezdevivar@kuenstlerhaus.at  
+43 1 587 96 63 13

### Alexandra Gamrot

gamrot@kuenstlerhaus.at  
+43 1 587 96 63 21

We look forward to hearing from you.

